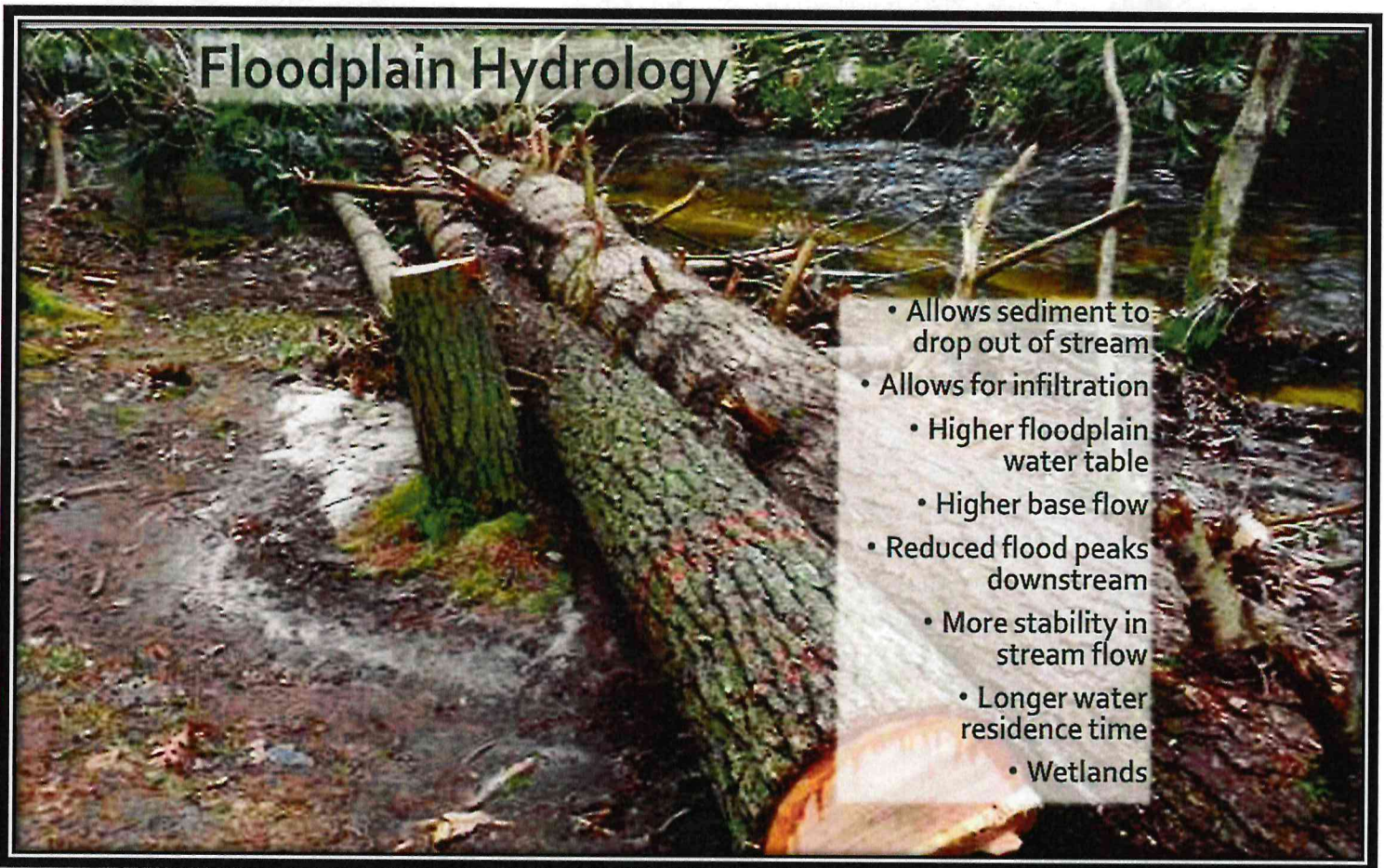


Higgins Run Large Wood Installation Project

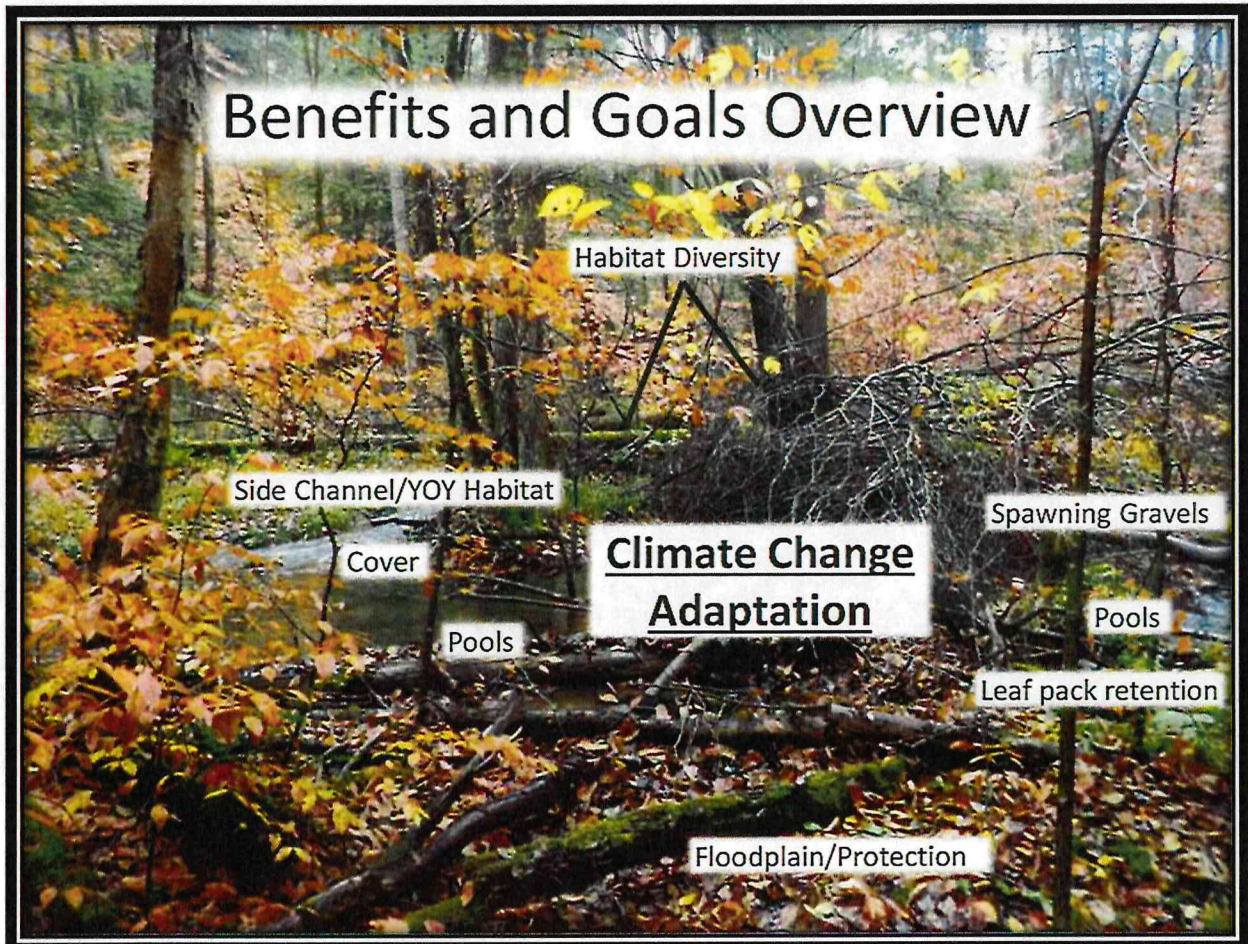
Constructed By:
Somerset Conservation District &
Western PA Conservancy

August 2022

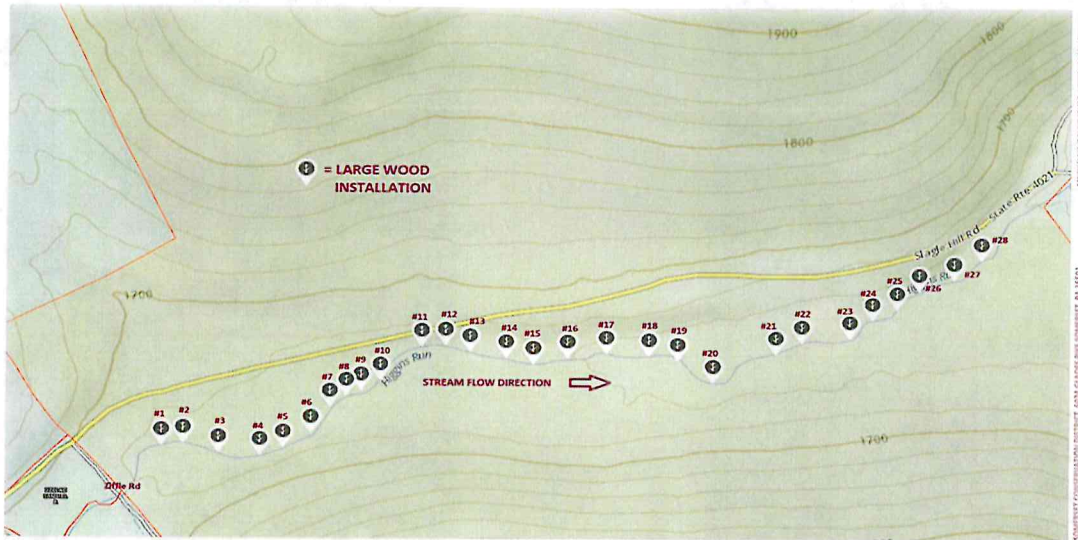




WPC



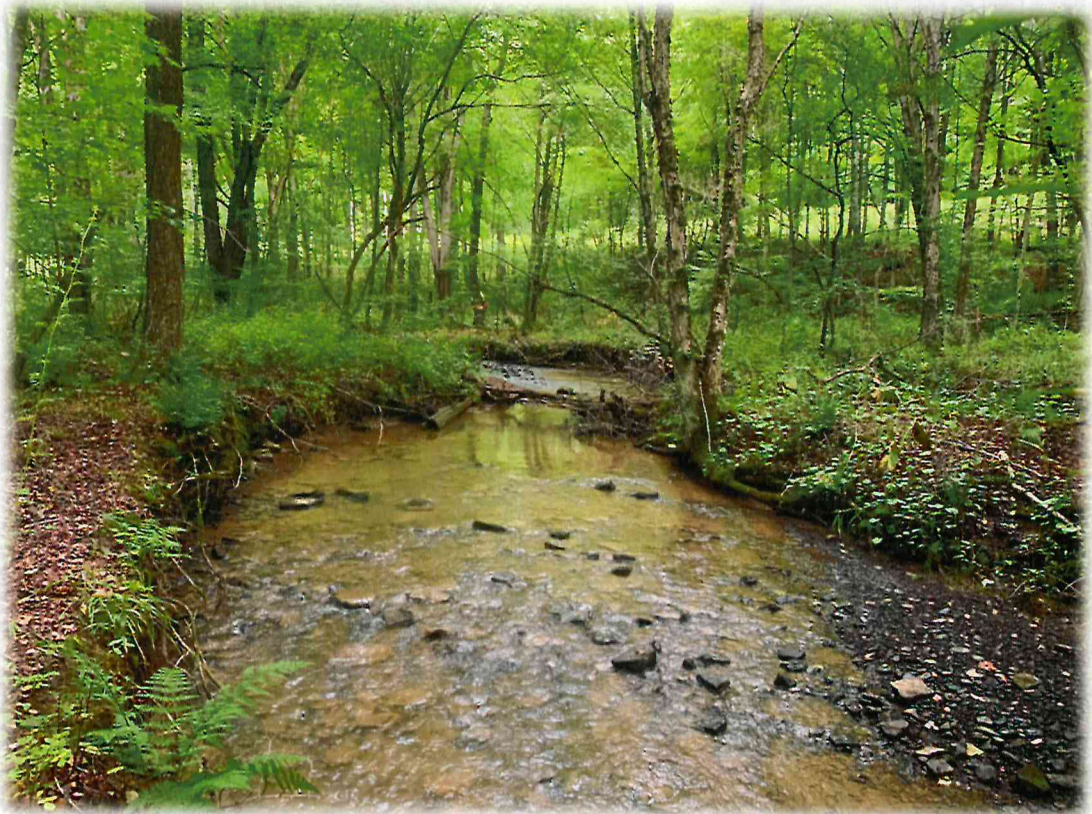
WPC



SOMERSET CONSERVATION DISTRICT HIGGINS RUN LARGE WOOD INSTALLATION PROJECT
 CONEMAUGHT TWP, SOMERSET COUNTY
 USGS HOOVERVILLE QUAD SHEET



Higgins Run Large Wood Project Layout



Higgins Run prior to large wood project was 80% + “single thread channel”, lacking in-stream channel diversity, wood debris and ample fish cover.



WPC staff felling a tree.



Grip-hoist in use



Felled cherry will serve as floodplain and in-stream habitat.



Large wood structure spans stream channel and is “pinned” on each bank to combat movement during high water events.



Large wood structure provides fish cover and stream channel diversity.



Large wood installation allows high water to be spread across Higgins Run floodplain.



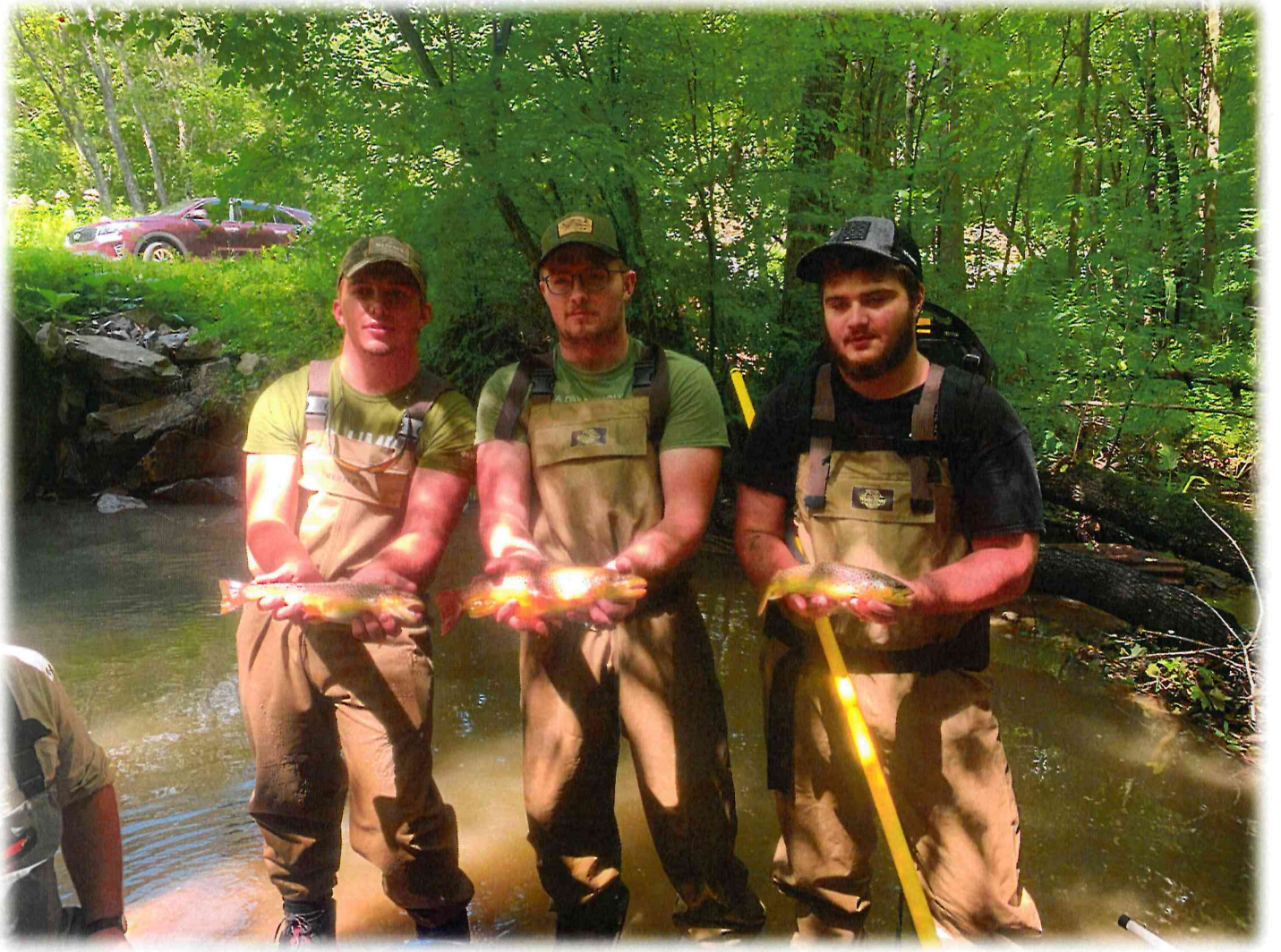
Large wood structure reduces stream velocity, retains sediment, debris and leaves.



Young of the year wild brown trout indicate stream health.



Adult wild brown trout captured during Higgins Run fish survey.



Garrett College Fisheries Science students performed an electro-fishing fish population survey of Higgins Run.